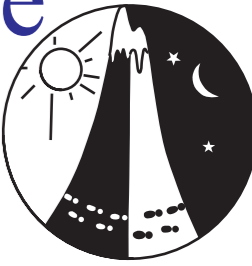


# George in the Jungle Rogaine

Spring 24 Hour Rogaine - August 21st and 22nd 2010

Incorporating the Paddy Pallin Schools Championships



*Paddy Pallin*

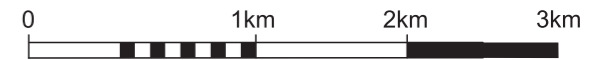
The Western Australian Rogaining Association is supported and sponsored by:



Department of Sport and Recreation



SCALE 1:50,000, 5 metre contour interval



## LEGEND

Building	■
Control	○ 70
Contours	
Dams	■
Hash House	△
Magnetic North Lines	↑ ↑
Out of Bounds	
Patrolled Road	—
Powerline	—
Fence	—
Road, Major Gravel	—
Road, Minor Gravel	—
Road, Continuation	—
Watercourse	
Water Drop	○ W

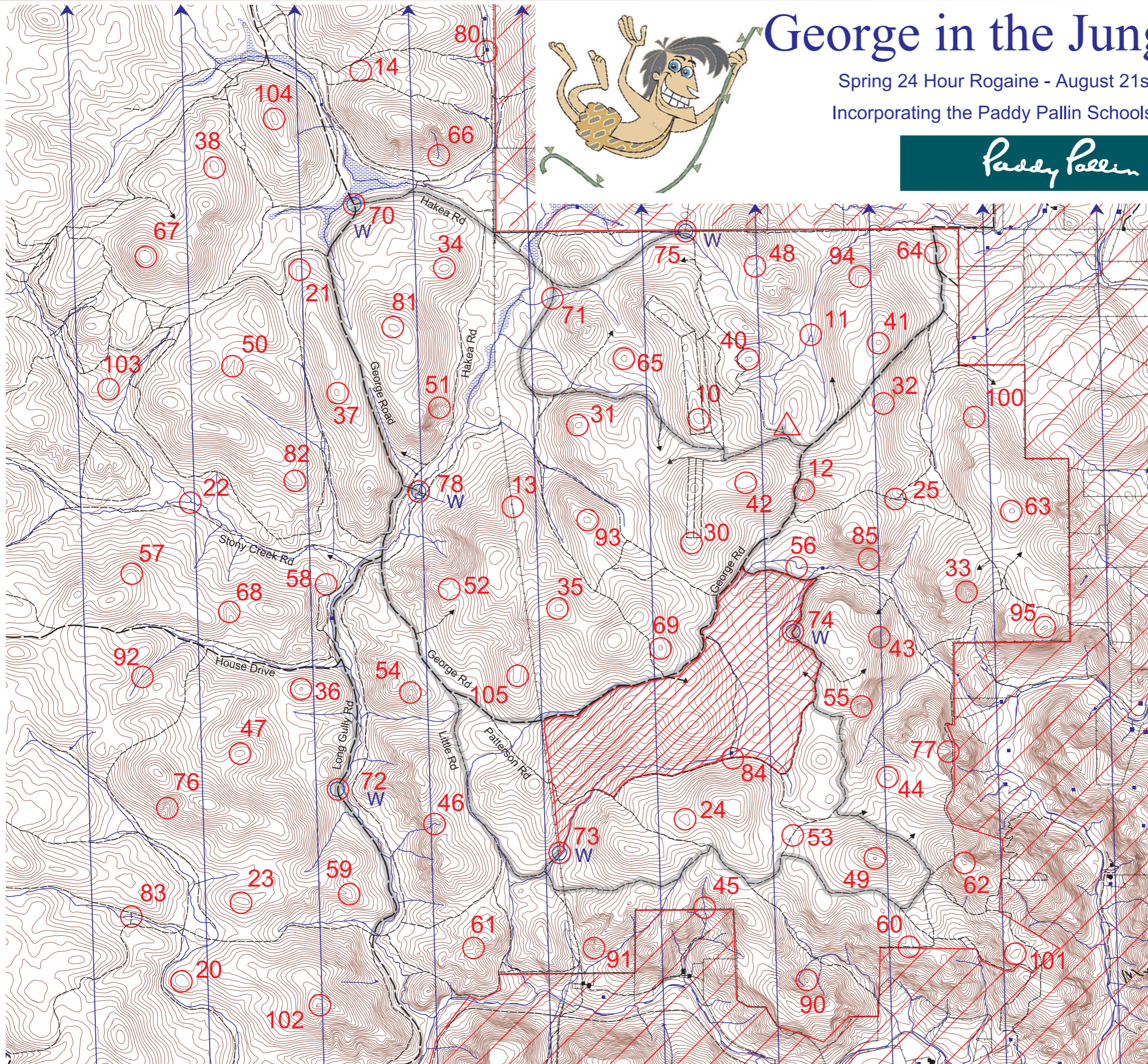
## SETTERS AND VETTERS

Owen Horton	Sheryl Foot
Judith Mulhuijsen	Richard Wainwright
Warren Smith	Ian Thomsett

Special thanks to Jamie Ridley and Glenn Hagan of DEC for assistance in granting access to the land covered by this map.

This map was produced using OCAD 9 by the Western Australian Rogaining Association. Data supplied by Landgate and used under copy licence 393/93. Possession of this map does not give right of entry to this area.

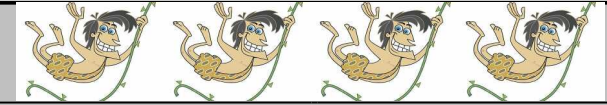
Western Australian Rogaining Association  
PO Box 1201 Subiaco WA. 6904  
wa.rogaine.asn.au





# THE GEORGE IN THE JUNGLE ROGAINE

## WARA Spring 24 Hour Rogaine 21 - 22 August 2010



No.	Description	Points		No.	Description	Points	Important Information	
10	The knoll	10		60	The spur, on the indistinct track	60	<b>Control Cards</b> From 1130 Saturday	
11	The watercourse junction	10		61	The saddle	60		
12	The gully	10		62	The knoll, NW side	60		
13	The spur, west side, on the power line	10		63	The knoll, broad	60		
14	The gully, broad	10		64	The track bend, 50m @ 270 degrees, on an indistinct culvert	60		<b>Briefing</b> 1145 Saturday
				65	The knoll	60		
20	The knoll, broad	20		66	The gully	60		
21	The spur, broad	20		67	The knoll	60		<b>Start</b> 1200 Saturday
22	The watercourse junction, South side	20		68	The gully, broad, head of	60		
23	The knoll, broad, west end	20		69	The knoll	60		<b>Finish</b> 1200 Sunday
24	The knoll, broad	20						
25	The western track junction	20		70	The track / road junction. 60m at 230 degrees (Water)	70		
				71	The track / creek crossing	70	<b>Hash House</b> Opens 1600 Saturday Closes 1300 Sunday	
30	The spur, southern end	30		72	The gully / road crossing (Water)	70		
31	The knoll	30		73	The track / power line intersection, 25m @ 220 degrees (Water)	70		
32	The gully, indistinct	30		74	The track, on a fork (Water)	70		
33	The gully	30		75	The fence junction (Water)	70	<b>Sunset</b> 1751 Saturday	
34	The knoll	30		76	The gully	70		
35	The knoll	30		77	The spur	70		
36	The knoll, broad	30		78	The track / creek crossing (Water)	70	<b>Sunrise</b> 0646 Sunday	
37	The knoll	30						
38	The knoll, broad	30		80	The dam, west side	80		
				81	The knoll, broad	80	<b>Moonrise</b> 1449 Saturday	
40	The knoll	40		82	The spur, broad	80		
41	The knoll	40		83	The track / creek crossing	80		
42	The knoll, broad	40		84	The track Intersection	80	<b>Moonset</b> 0504 Sunday	
43	A watercourse junction	40		85	The gully	80		
44	The knoll, broad	40						
45	The watercourse	40		90	The knoll, rocky	90	<b>Controls Used</b> 77	
46	The gully	40		91	The knoll	90		
47	The knoll, broad	40		92	The watercourse	90		
48	The saddle	40		93	The knoll, broad	90	<b>Total Points</b> 4190	
49	The knoll, broad	40		94	The spur	90		
				95	The knoll, broad	90		
50	The gully, indistinct	50					<b>Patrolled Roads</b> (Marked in grey on map) George Road Hakea Road Long Gully Road un-named roads in SE corner	
51	The gully	50		100	The spur	100		
52	The saddle, broad	50		101	The knoll, broad	100		
53	The saddle, broad, on the indistinct track	50		102	The summit	100		
54	The gully	50		103	The spur	100		
55	The gully, head of	50		104	The knoll, broad	100		
56	A bend in the creek	50		105	The spur, broad	100		
57	The spur, broad	50						
58	The spur, south side	50						
59	The spur	50						